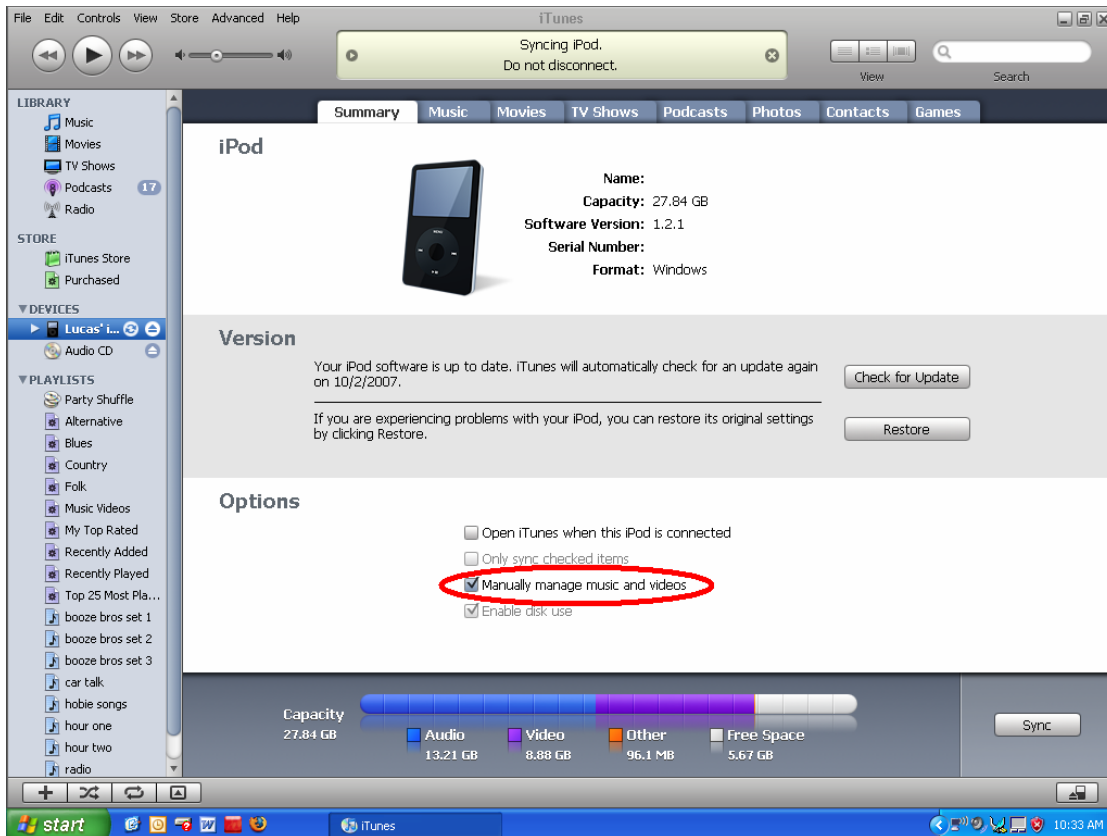


Using your iPod on-air: A tutorial

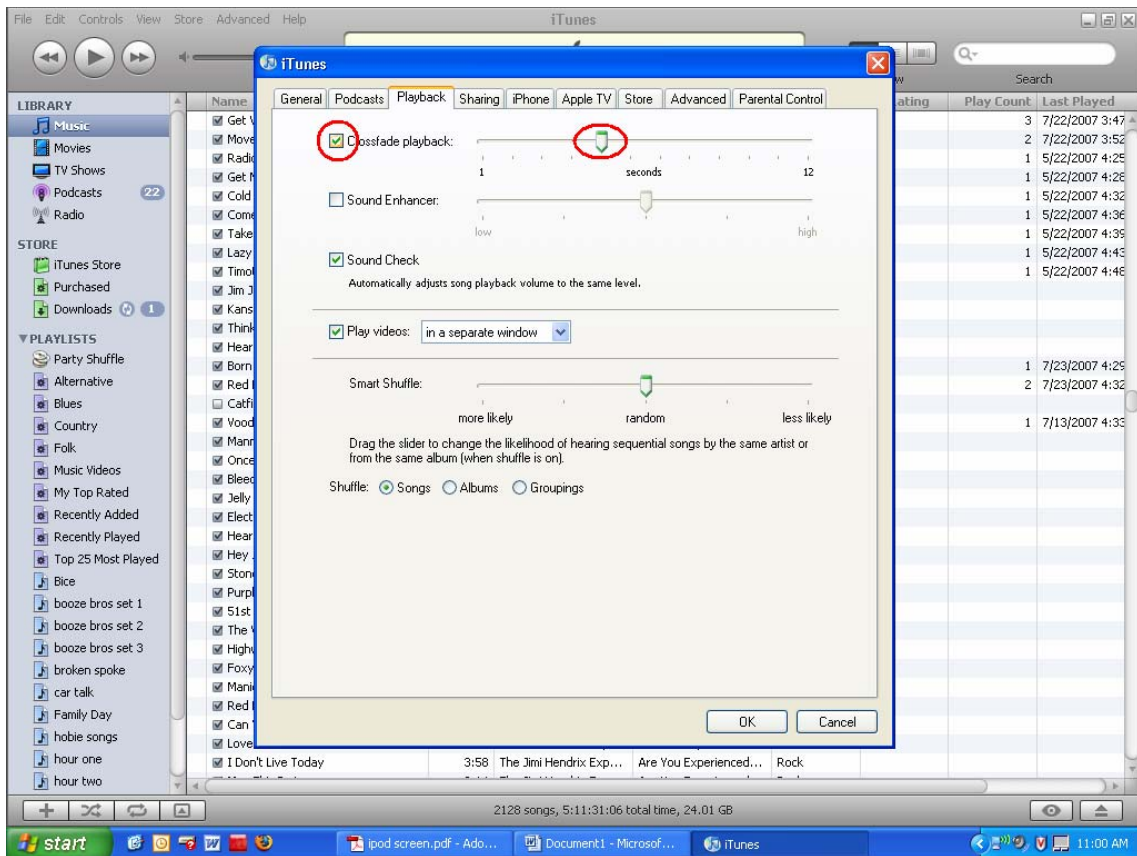
Once you plug in your iPod to the computer, you should see the following screen. You will want to check the "Manually manage music and videos" box.



After this is done you may begin using your iPod. It is highly recommended that you create a new playlist for each show as iTunes will automatically play the successive songs in your library.

You may also want to change the playback settings to include a longer crossfade. This will reduce the amount of time between songs and make your show sound better. (See Page 2)

Go to: Edit - Preferences and your screen will look like this:



Check the crossfade playback box and adjust the time accordingly. It's not a perfect solution, but it will limit the amount of dead-air between tracks and help make your show sound better.

Have a great shift!